



Technical Information
1943-Z/2243-Z

HMF Z001536



Contents

Catalogue no.	Section
31 110	00
Date	Page
24-02-2014	

	Series	Rev.	Section
Technical Data	1943-Z/2243-Z	20-05-2013	31 110 10
Lifting capacity diagram, 1943-Z2	1943-Z	20-05-2013	31 110 22
Lifting capacity diagram, 2243-Z2	2243-Z	20-05-2013	31 110 24
Dimension sketch	1943-Z/2243-Z	20-05-2013	31 110 40
Slewing radius	1943-Z/2243-Z	24-02-2014	31 110 42
Dimension sketch, fixed stabilizer legs	1943-Z/2243-Z	20-05-2013	31 110 50
Dimension sketch, swing-up stabilizer legs 20°- 60° (manual)	1943-Z/2243-Z	20-05-2013	31 110 51
Dimension sketch, swing-up stabilizer legs 180° (manual + hydraulic)	1943-Z/2243-Z	20-05-2013	31 110 52
Dimension sketch, stand-up platform (RC)	2243-Z	20-05-2013	31 110 57
Dimension sketch, stand-up platform (valve control)	1943-Z	20-05-2013	31 110 58
Centres of gravity	1943-Z/2243-Z	20-05-2013	31 110 75

Technical Data

Catalogue no.	Section
31 110	10
Date	Page
20-05-2013	

Performance		1943-Z2	2243-Z2
Loading group (EN12999)		HC1 HD4	HC1 HD5
Load moment	tm	18,1	20,7
Hydraulic reach	m	9,1	9,1
Hydraulic telescopic movement	mm	3860	3860
Lifting capacity, hydraulic	kg-m	3520-5,1 2520-7,0 1960-9,0	4020-5,1 2890-7,0 2240-9,0
Slewing torque, gross	kNm	27,1	27,1
Slewing angle	°	400	400
Max. heel at max. load moment	°	5	5
Slewing speed	°/s	24	24

Dimensions			
Height above chassis (folded)	mm	2445	2445
Width	mm	2500	2500
Length (standard + HS RC)	mm	860	860
Length (HS, direct valve control)	mm	885	885
Stabilizer spread, S1 (standard)	mm	5575	5575
Stabilizer spread, D	mm	6455	6455

Weights, basic loader			
Standard loader 1), excl. stabilizers	kg	2300	2300
Stabilizers, S1 fixed	kg	290	290
Stabilizers, S1 swing-up	kg	295	295
Stabilizers, S1 hydr. swing-up	kg	300	300
Stabilizers, D fixed	kg	365	365
Stabilizers, D swing-up	kg	370	370
Stabilizers, D hydr. swing-up	kg	375	375
Oil in loader (stowing position)	kg	45	45

1) Weights ± 5% because of tolerances for plate thickness

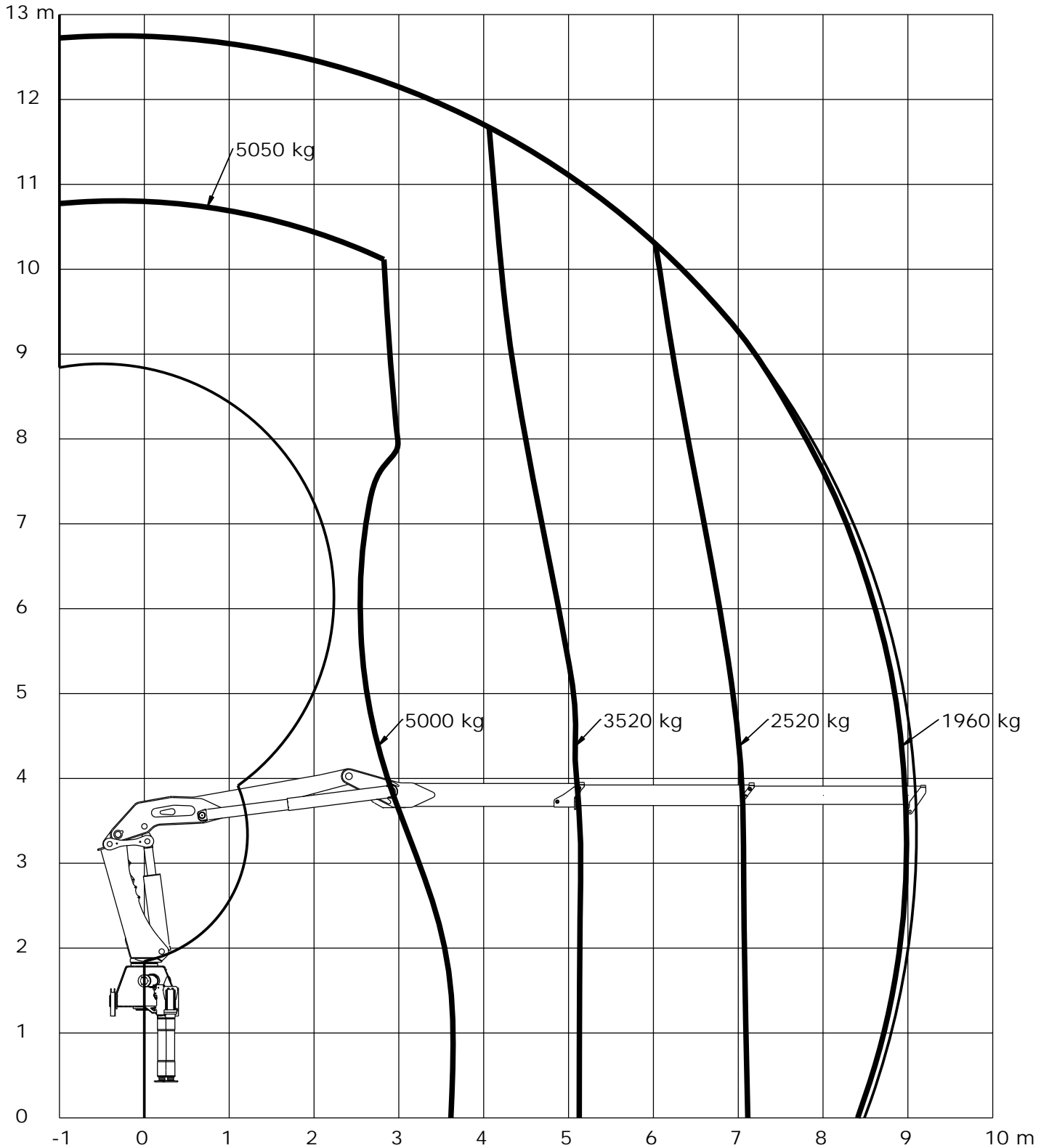
Weights, equipment			
Stand-up controls (HSRC), std.	kg	-	60
Stand-up controls (HS), direct valve control	kg	70	-
Top seat (TSRC)	kg	-	90
High-pressure filter	kg	7	7
Oil cooler	kg	25	25

Max. load on stabilizers (per stabilizer cylinder)			
S1, fixed	kN	120	120
S1, swing-up	kN	120	120
S1, hydr. swing-up	kN	120	120
D, fixed	kN	100	100
D, swing-up	kN	100	100
D, hydr. swing-up	kN	100	100

Power consumption / oil capacity			
Working pressure	Bar	295	330
Max. pump performance, Danfoss fixed flow		60	70
Max. pump performance, Danfoss variable		80	100

Lifting capacity diagram, 1943-Z2

Catalogue no.	Section
31 110	22
Date	Page
20-05-2013	1 (1)



Loading group: EN12999 HC1 HD4/B3

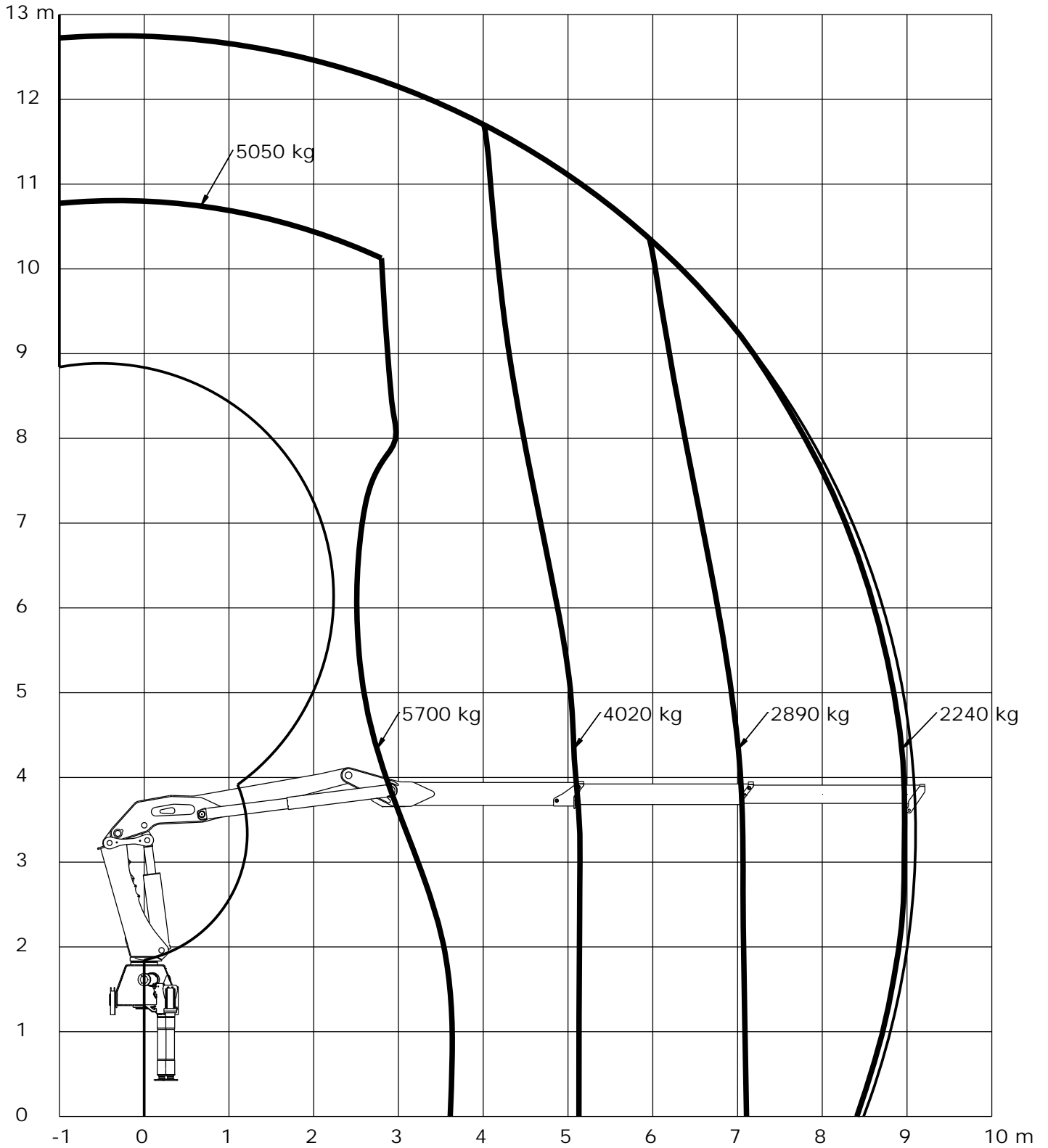


Technical Information 2243-Z



Lifting capacity diagram, 2243-Z2

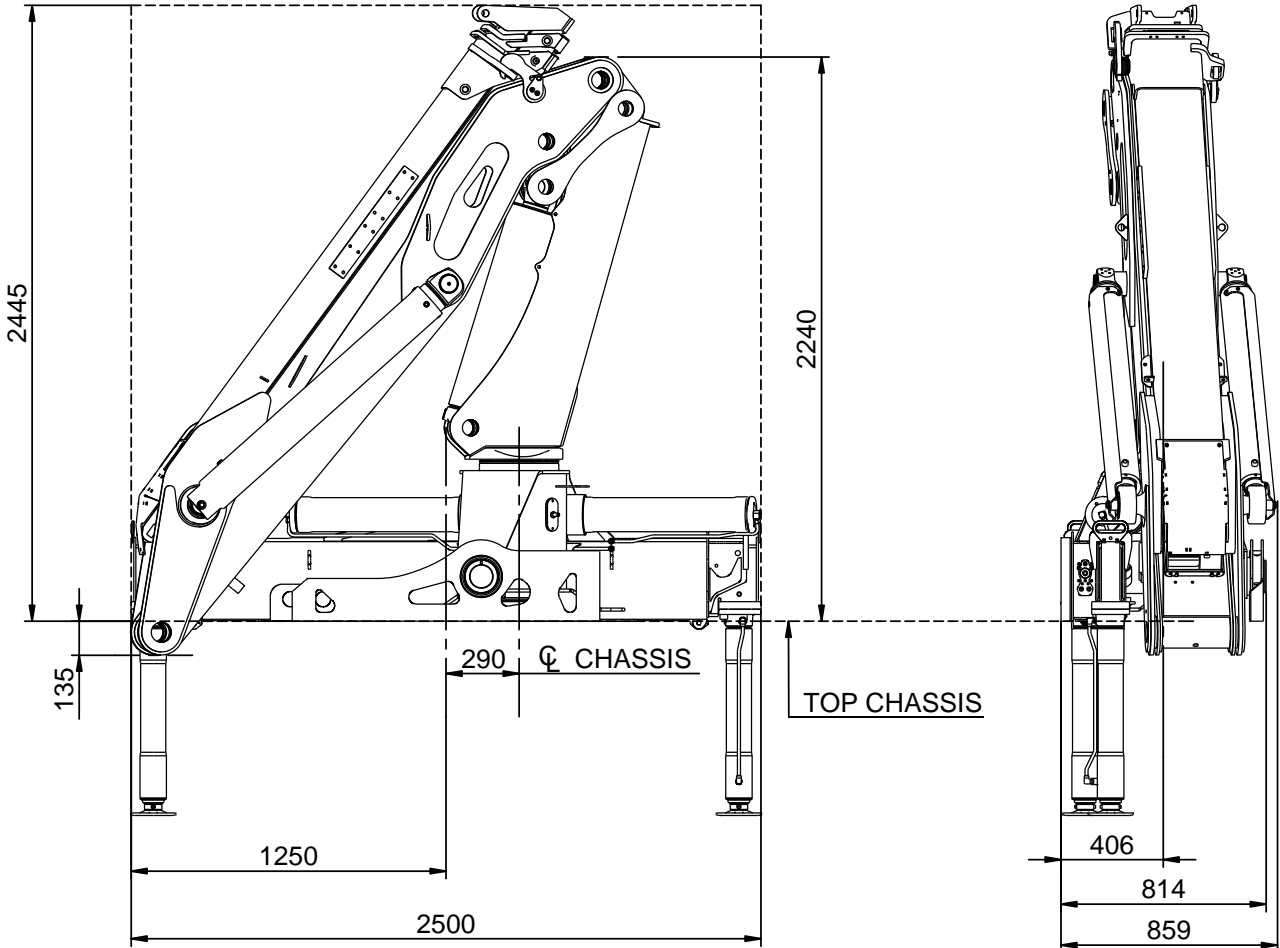
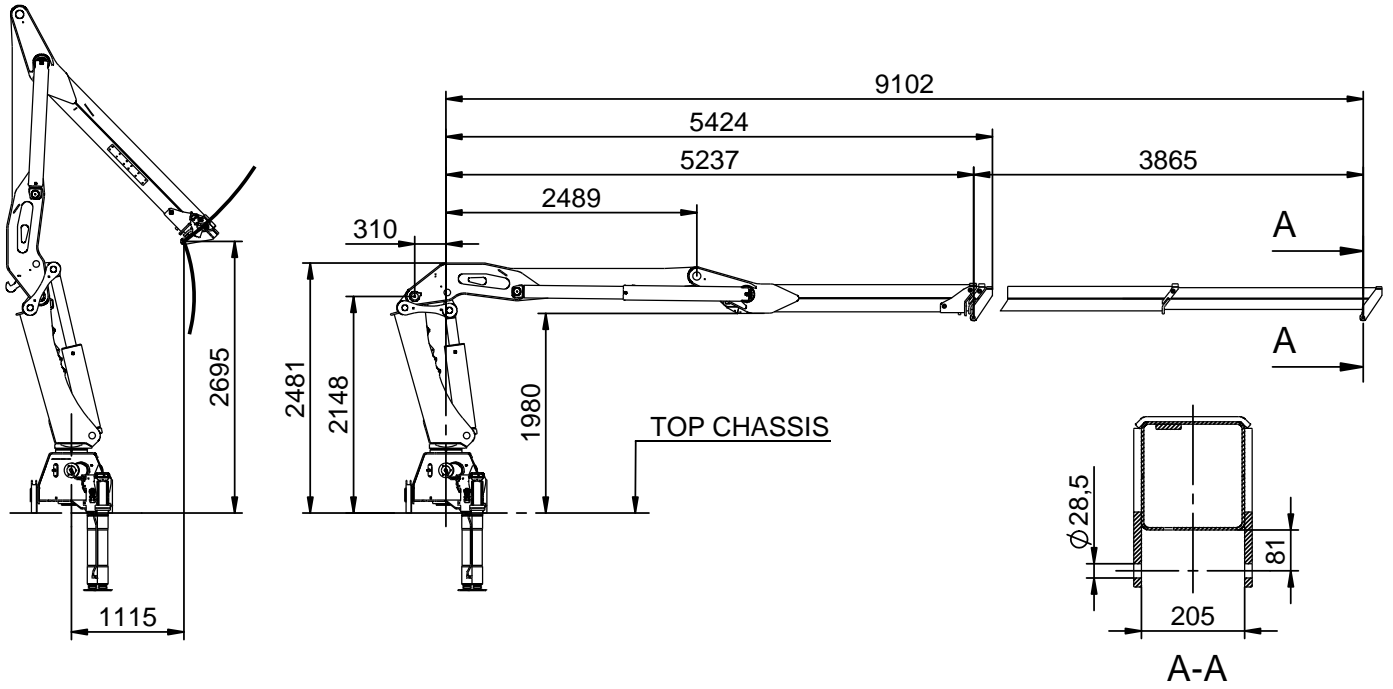
Catalogue no.	Section
31 110	24
Date	Page
20-05-2013	1 (1)



Loading group: EN12999 HC1 HD5/B3

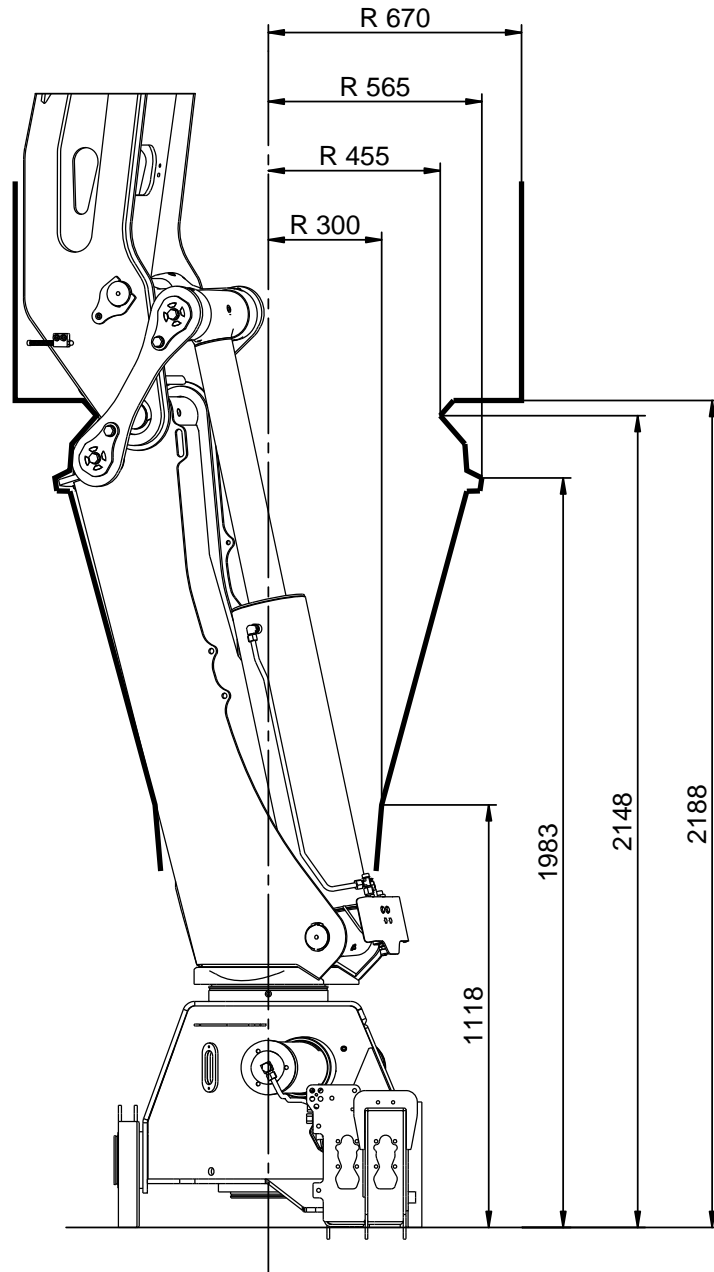
Dimension sketch

Catalogue no.	Section
31 110	40
Date	Page
20-05-2013	1 (1)



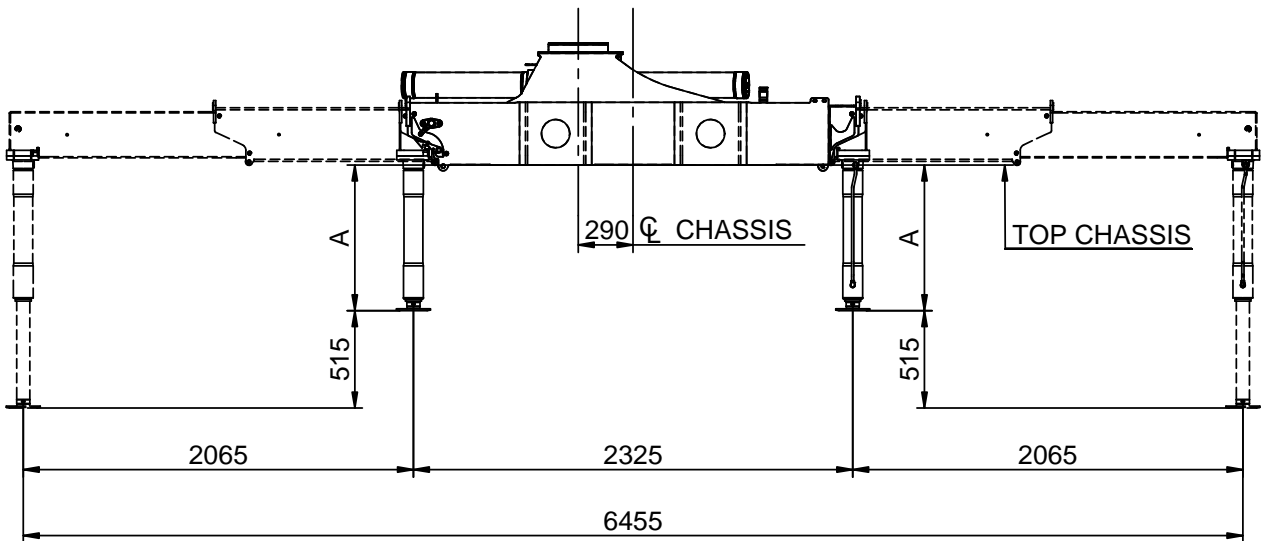
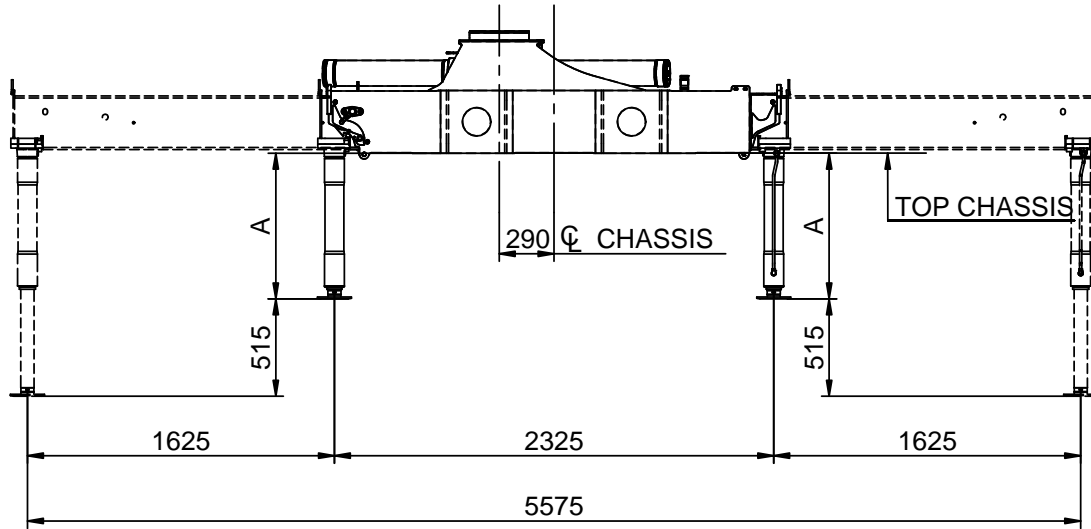
Slewing radius

Catalogue no.	Section
31 110	42
Date	Page
24-02-2014	1 (1)



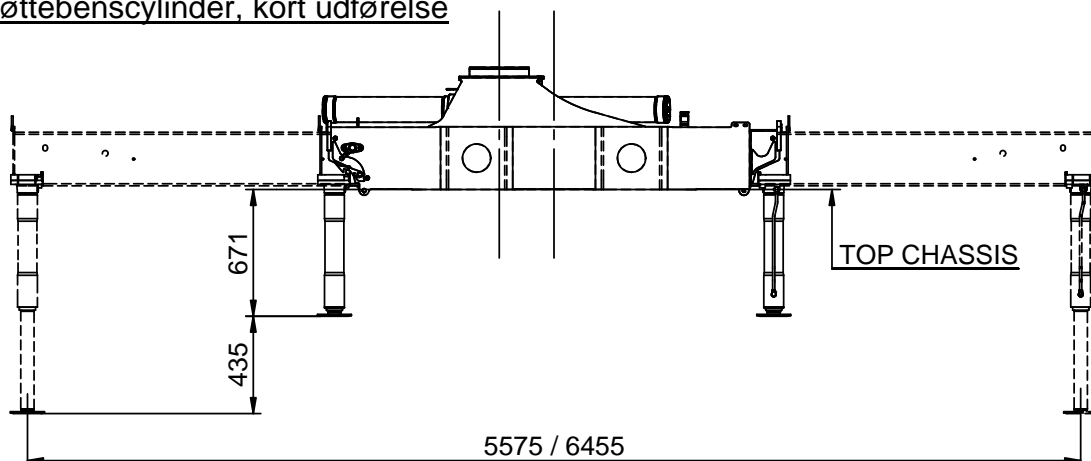
Dimension sketch, fixed stabilizer legs

Catalogue no.	31 110	Section	50
Date	20-05-2013	Page	1 (1)



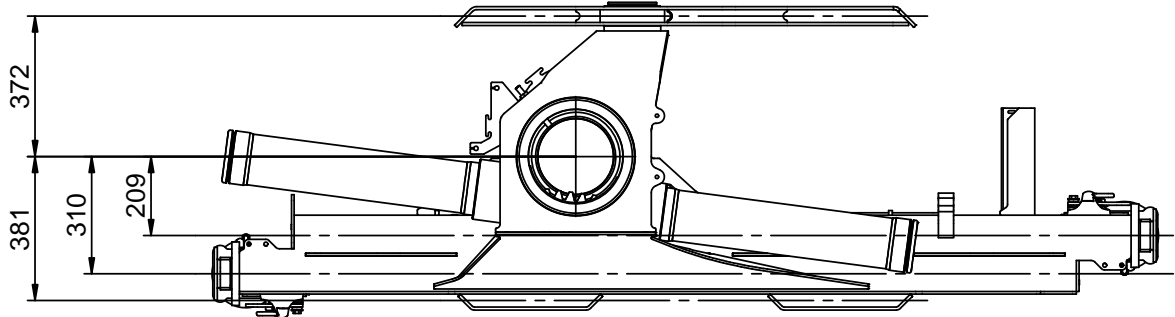
A	770	870	970

Støttebencylinder, kort udførelse



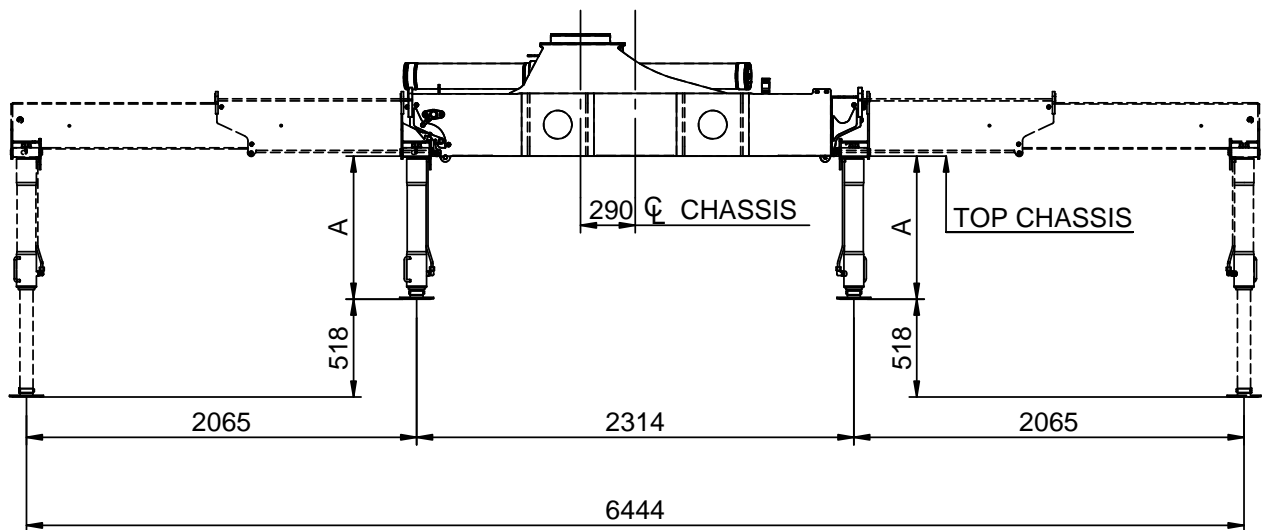
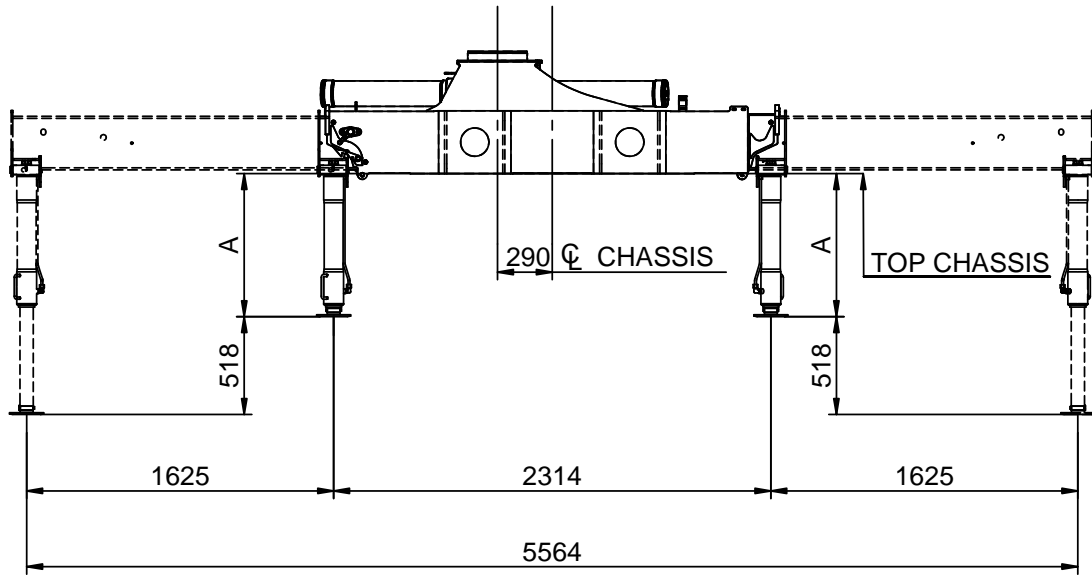
Dimension sketch, fixed stabilizer legs

Catalogue no.	31 110	Section	50
Date	20-05-2013	Page	1 (1)



Dimension sketch, swing-up stabilizer legs 20°- 60° (manual)

Catalogue no.	Section
31 110	51
Date	Page
20-05-2013	1 (1)



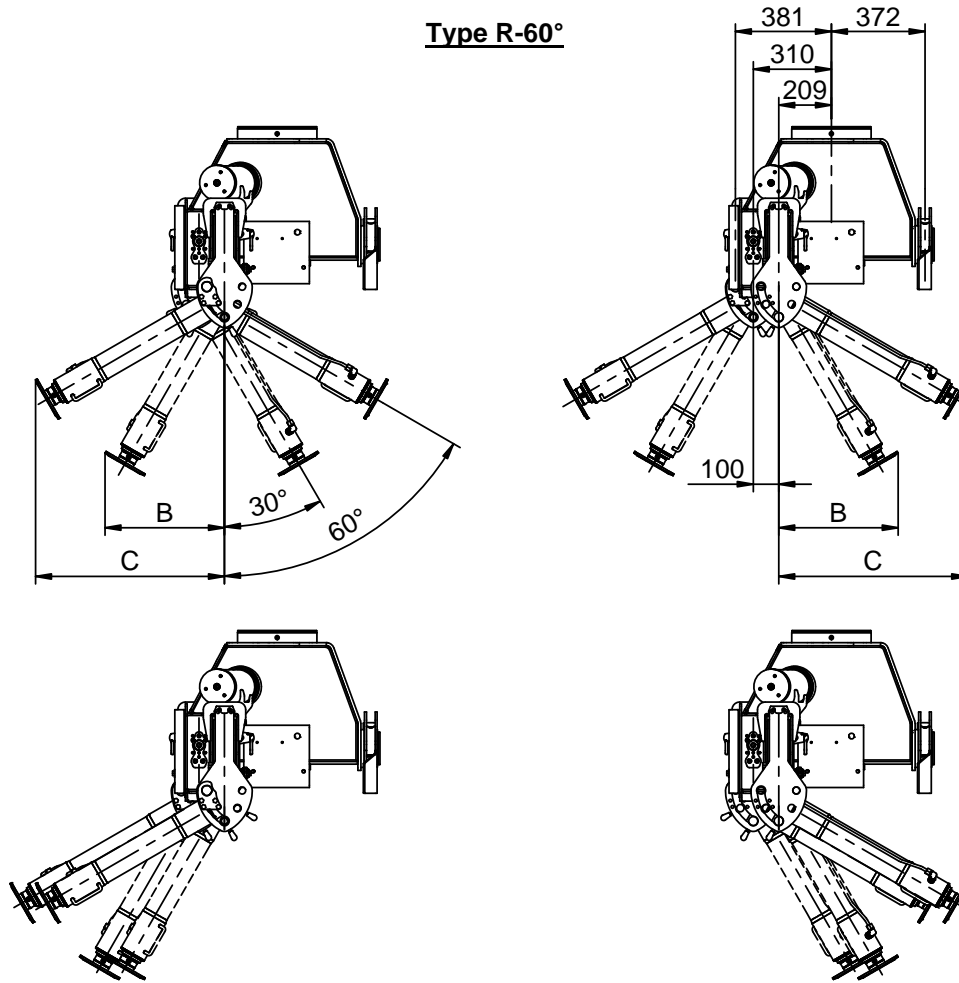
A Type R-60°	765	865	965
A Type R-20° (Obsolete)	757	857	957



Dimension sketch, swing-up stabilizer legs 20°- 60° (manual)

Catalogue no.	Section
31 110	51
Date	Page
20-05-2013	1 (1)

Type R-60°



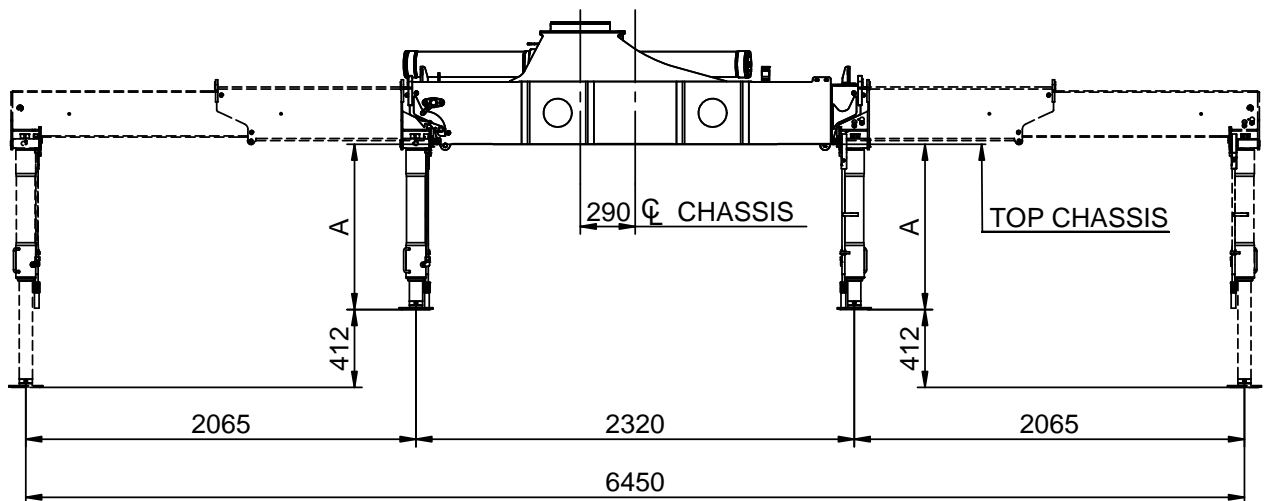
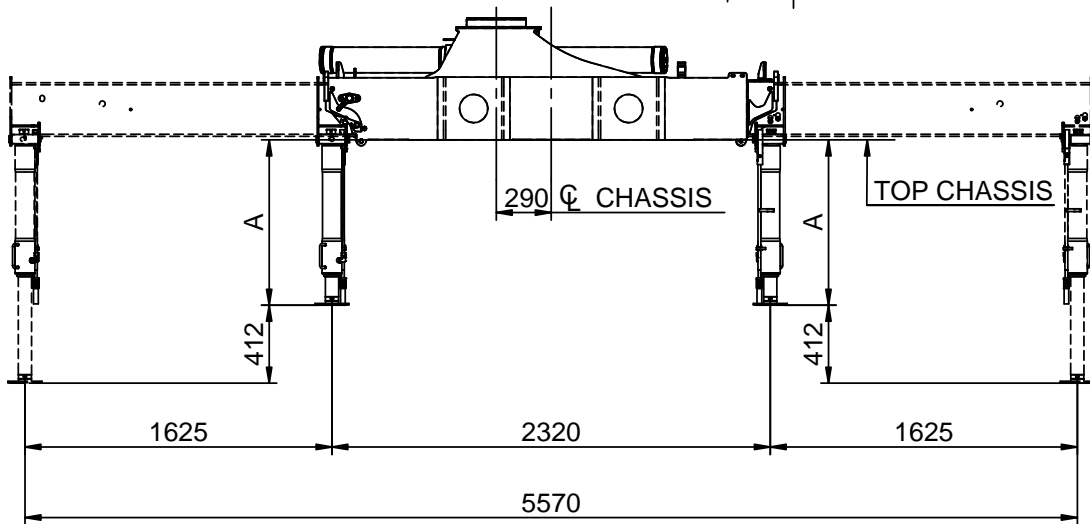
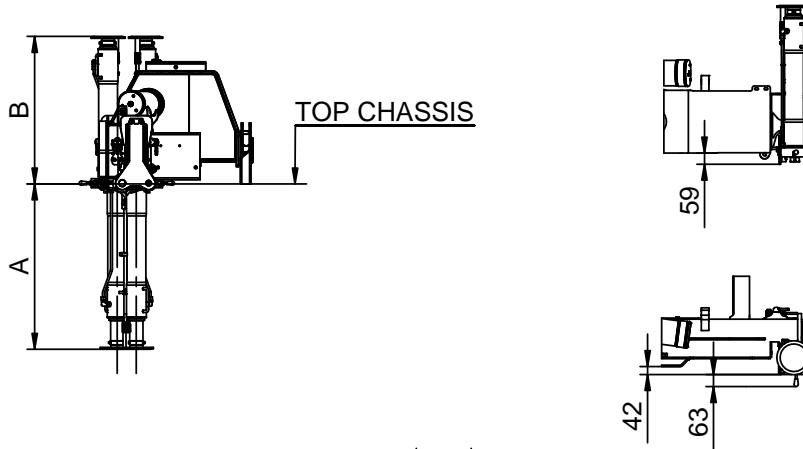
Type R-20° (Obsolete)

B	474	524	574
C	750	836	923
D	366	402	438



Dimension sketch, swing-up stabilizer legs 180° (manual + hydraulic)

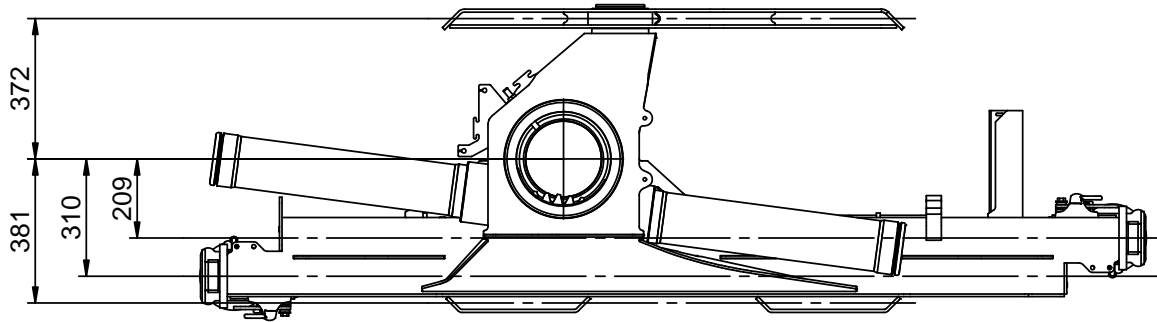
Catalogue no.	Section
31 110	52
Date	Page
20-05-2013	1 (1)



A	875	975	1075
B	781	881	981

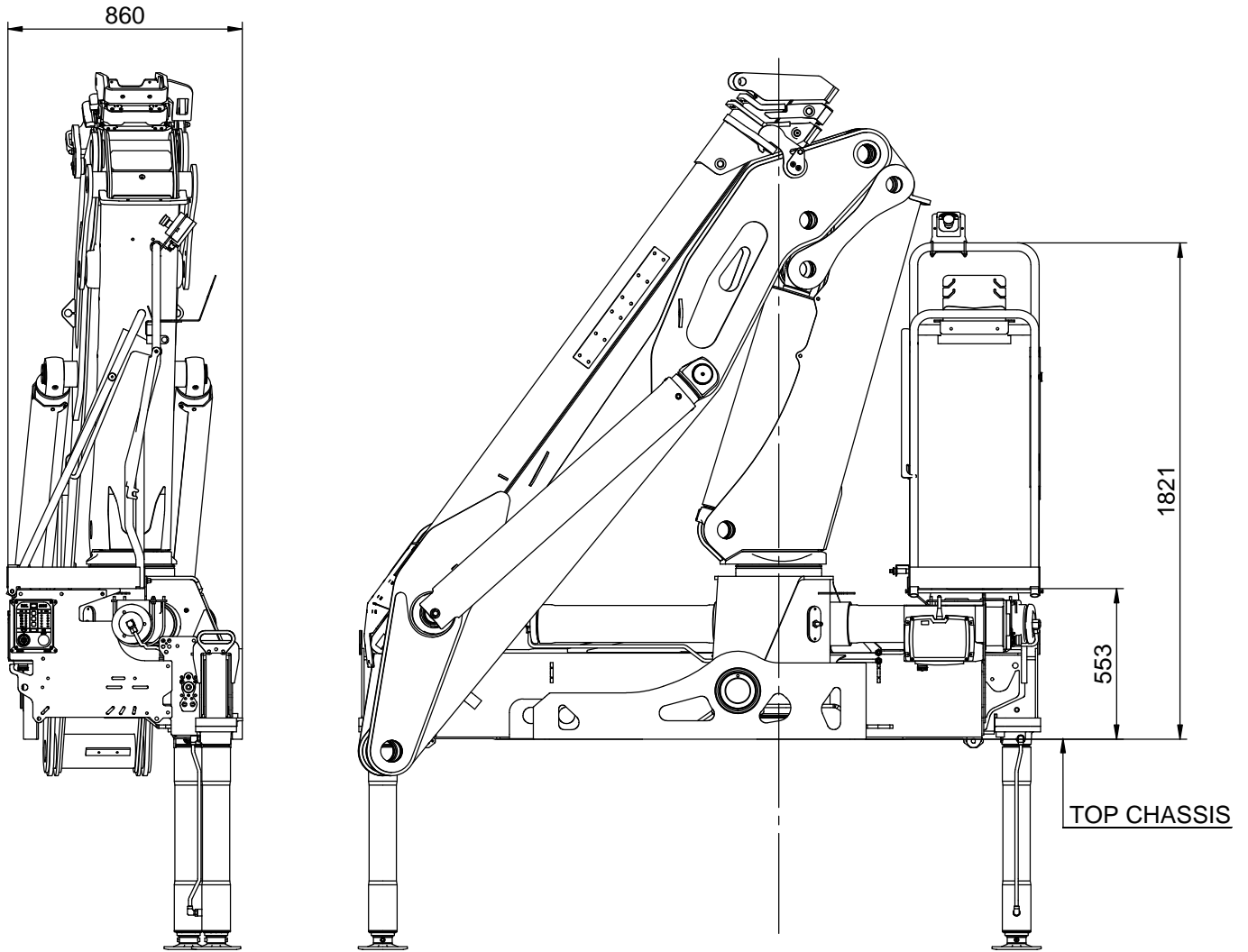
Dimension sketch, swing-up stabilizer legs 180°
(manual + hydraulic)

Catalogue no.	31 110	Section	52
Date	20-05-2013	Page	1 (1)



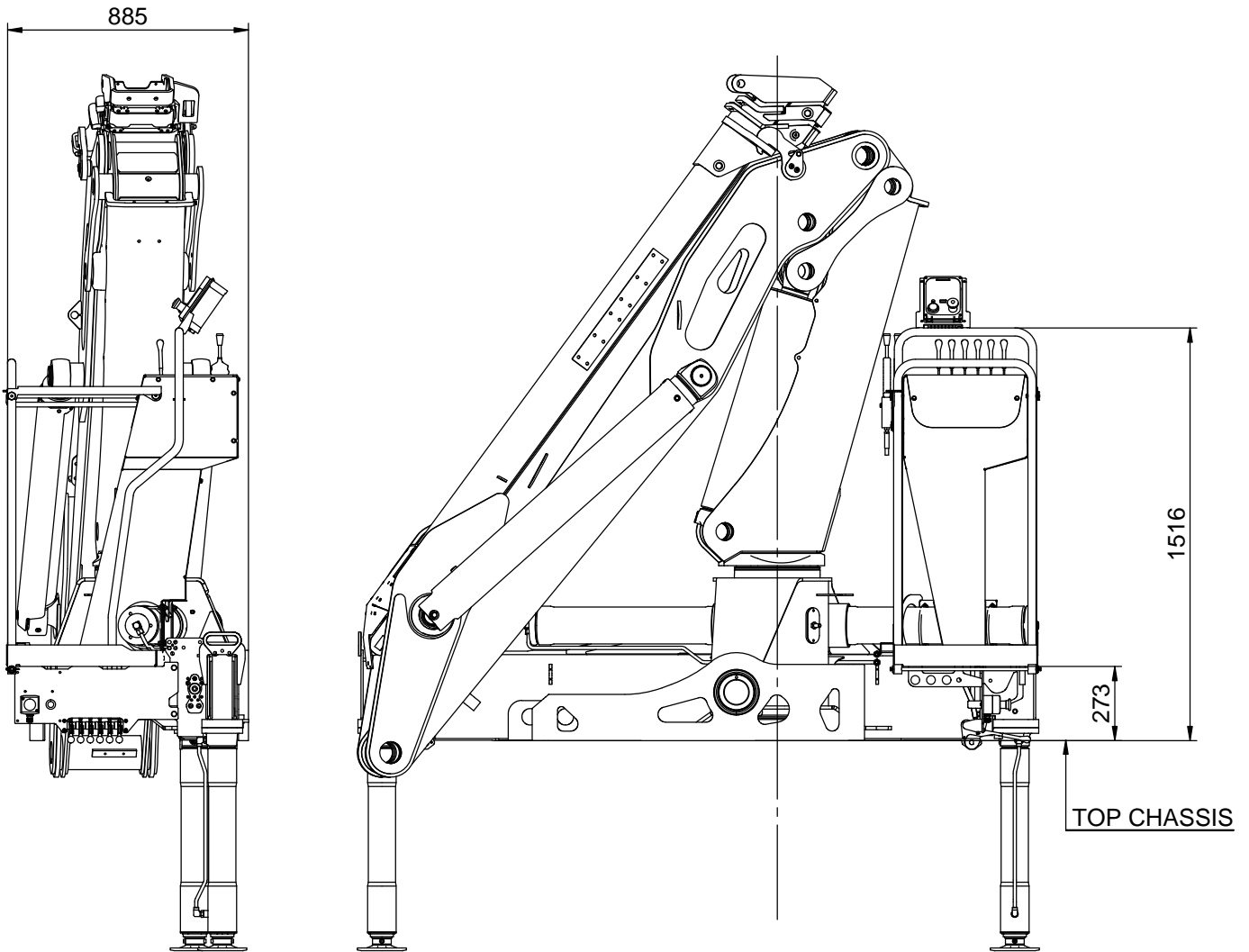
Dimension sketch, stand-up platform (RC)

Catalogue no.	31 110	Section	57
Date	20-05-2013	Page	1 (1)



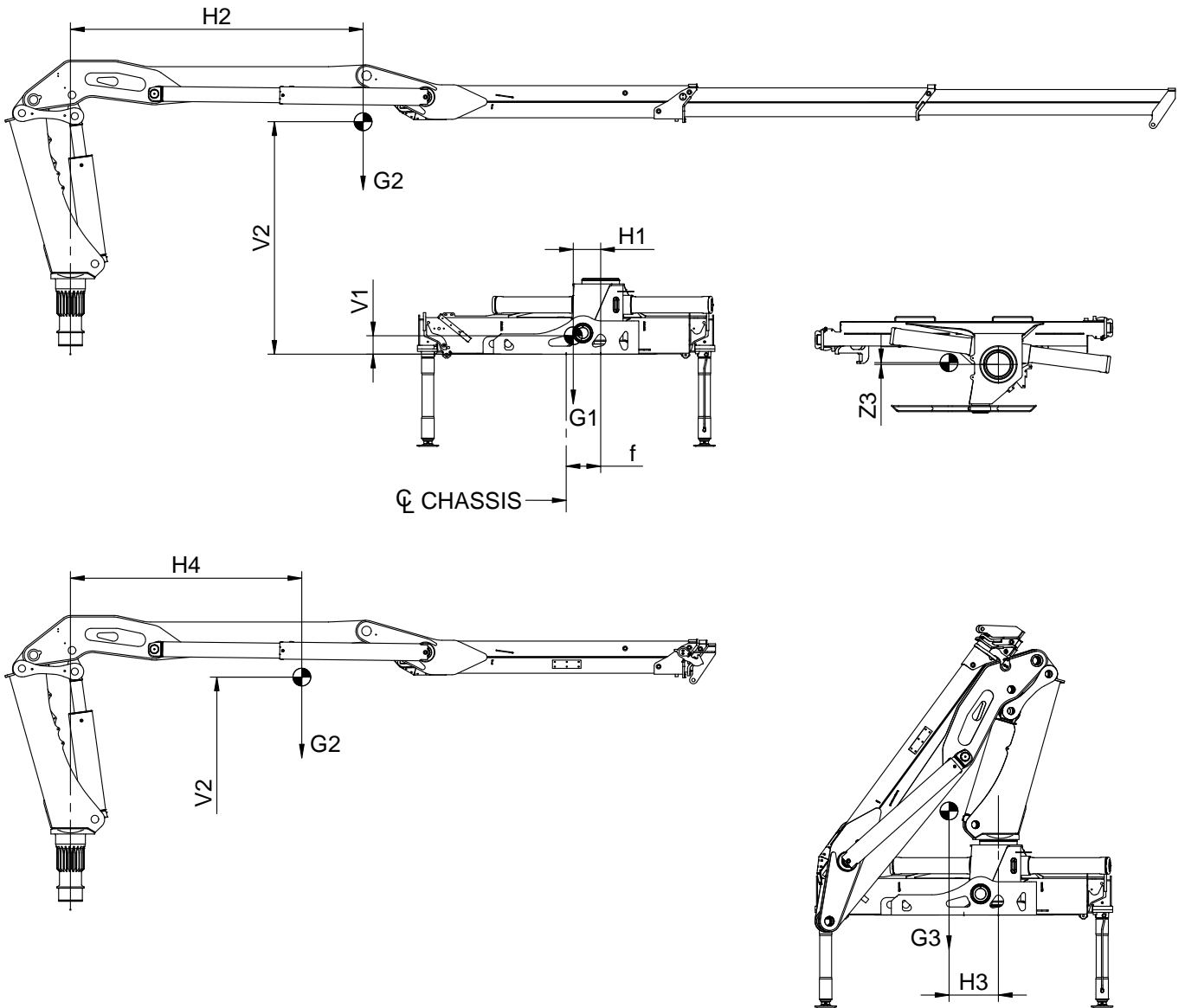
Dimension sketch, stand-up platform (valve control)

Catalogue no.	31 110	Section	58
Date	20-05-2013	Page	1 (1)



Centres of gravity

Catalogue no.	Section
31 110	75
Date	Page
20-05-2013	1 (1)



	[mm]									[kg]		
	V1	V2	V3	H1	H2	H3	H4	Z3	f	G1	G2	G3
1943-Z2 / 2043-Z2	155	1955	875	230	2460	415	1945	15	290	780	1740	2520

