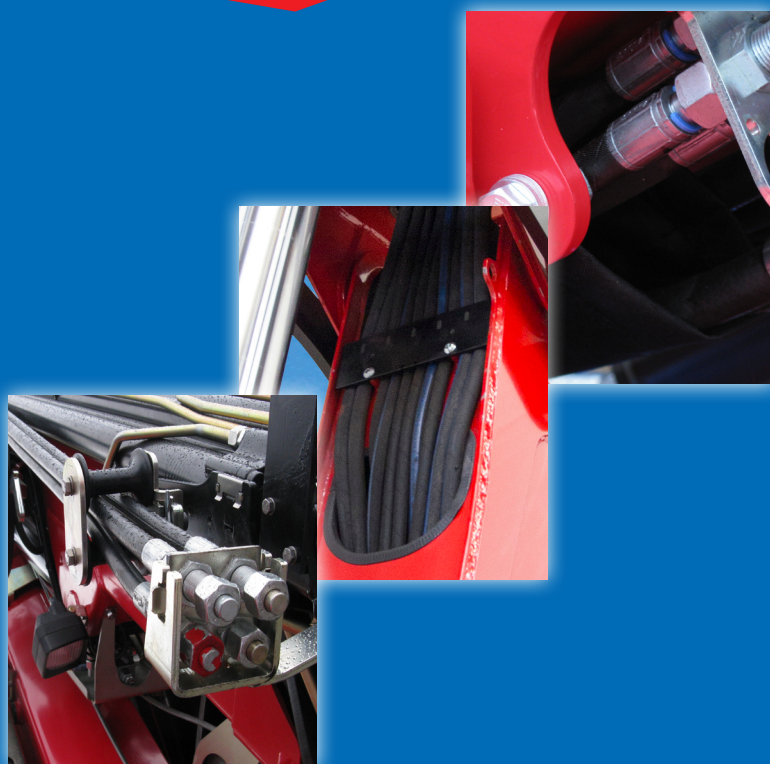


# 2820K-MC



- power to lift





Loading group HC1/HD4/B3		2820-K2	2820-K3	2820-K4	2820-K5
Type				K-MC	
<b>TECHNICAL DATA</b>					
Load moment	tm	26.1	25.2	24.9	24.1
Hydraulic reach	m	8.3	10.3	12.4	14.6
Slewing torque	kgm		3800		
Slewing angle	°		420		
Working pressure	bar		315		
Weight excl. stabilizer legs	kg	2590	2790	2990	3160
Weight of stabilizer legs, standard	kg		315		
Pump performance, fixed flow pump	l/min		65		
Oil tank capacity, separate tank	l		160		
Power consumption	kW		34		
<b>GEOMETRY</b>					
Height above mounting surface	mm		2350		
Width, folded	mm		2500		
Length of crane, no extra valves	mm	1024	1024	1024	1024
Length with 2 extra valves in internal hose reel	mm	1024	1024	1024	1024
Length with 2 extra valves in hose guides	mm	1147	1147	1147	1147
Hook height 1.5 m from column	m	2.5	2.5	2.4	2.4
Dual Power Plus link arm system				Basic	
Over-bending on crane	°		15		
<b>CONTROL MODE</b>					
Manual operation of crane (JS)				Basic	
Manual operation of stabilizer functions				Basic	
Dual control of crane and stabilizer functions				Basic	
<b>CONTROLS</b>					
RCL 5300 Safety System				Basic	
Control valve type (-h) for crane operation				Basic	
Control valve type (-h) for operation of stabilizer legs and beams				Basic	
Full working speed in the entire working area				Basic	
<b>OPTIONS: HYDRAULIC EQUIPMENT</b>					
Oil cooler				Option	
High-pressure filter				Basic	
Hydraulically extensible stabilizer beam				Basic	
Fixed stabilizer leg				Basic	
Swing-up stabilizer leg, 20°				Option	
Swing-up stabilizer leg with gas spring, 180°				Option	
Hydraulic swing-up stabilizer leg, 180°				Option	
2 extra valves in hose guides				Option	
2 extra valves in hose reels internally in the jib extensions				Option	
160 l oil tank mounted on the crane				Option	
<b>OTHER EQUIPMENT</b>					
Work light on crane				Option	



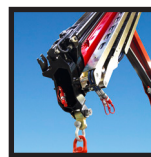
### HMF RCL 5300

The safety system monitors the load moment of the crane as well as the vehicle stability and thereby, the safety of the crane operator.



### Efficient dual Control

The crane is equipped with dual control of both the crane control valve and the stabilizer control valve.



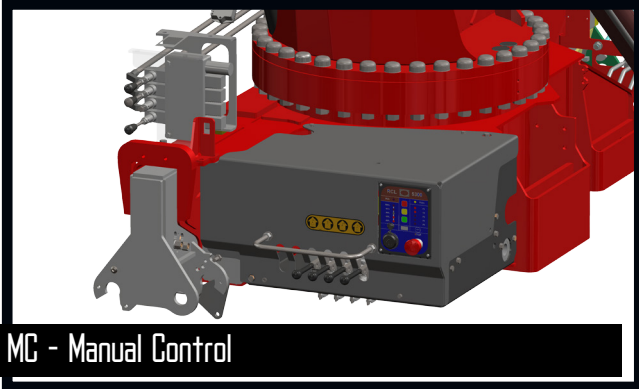
### Extra Valves, Guides

2 extra valves are fed in sturdy hose guides alongside the jib extension system.



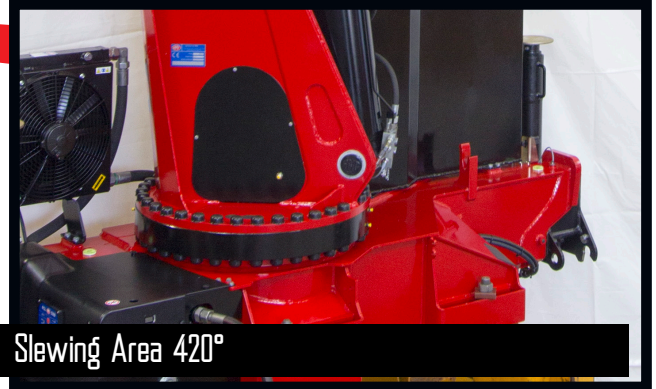
### Dual Link Arm System

The HMF dual Power Plus link arm system has an excellent lifting capacity at long reach and in high positions. The dual Power Plus link arms also make it possible to lift heavy loads close to the column.



MC - Manual Control

The crane is equipped with a manually operated control valve providing precise and simple control of the crane functions. The RCL 5300 TCL Safety System will only limit the load moment increasing movements if the crane reaches 100% capacity - all other functions remain fully operational.



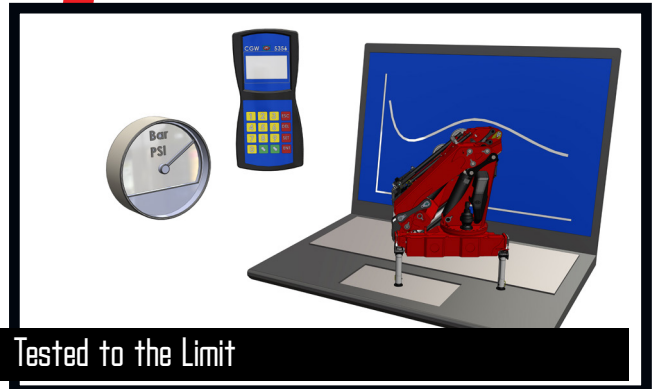
Slewing Area 420°

The crane has a slewing area of as much as 420° and the turntable and slewing gear provide a slewing torque of almost 4 tm. The slewing system is equipped with an electronic braking system, RSR-E, which reduces the slewing speed before the crane reaches the stop.



Corrosion and Wear and Tear

All painted surfaces are coated with EQC surface treatment, and all hydraulic pipes are finished with Zistaplex coating. All hydraulic components are coated with a zinc-nickel surface treatment to be able to pass the strict 720 hours salt spray test (EN/ISO 9227 standard), and all parts of stainless steel are corrosion-resistant.



Tested to the Limit

An HMF crane is never released until it has been tested again and again. All crane series are put on the test bench, where the crane is loaded up to at least 125 % of its nominal capacity in all positions. Not just once, but 145,000 times! The crane is also exposed to a dynamic test in which the durability of all components is tested.

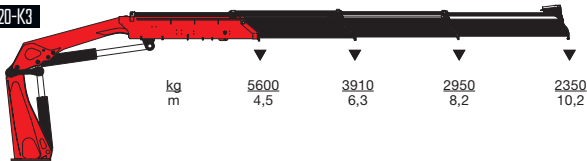


- power to lift

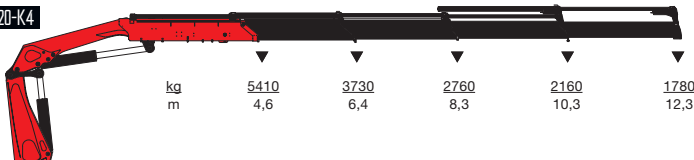
HMF 2820-K2



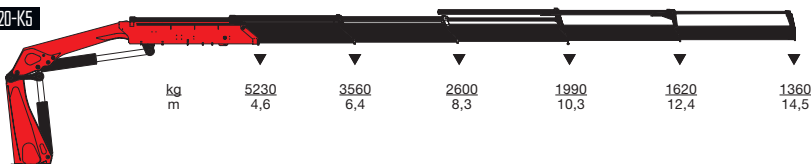
HMF 2820-K3



HMF 2820-K4



HMF 2820-K5



▼ Lifting capacity without manual extensions  
 ▽ Lifting capacity with manual extensions



- power to lift  
**HMF Group A/S**

Oddervej 200 · DK-8270 Højbjerg  
 Tel.: +45 8627 0800 · Fax: +45 8627 0744 · info@hmf.dk

[www.hmf.dk](http://www.hmf.dk)

Z008870-03

We reserve the right to introduce improvements and modifications